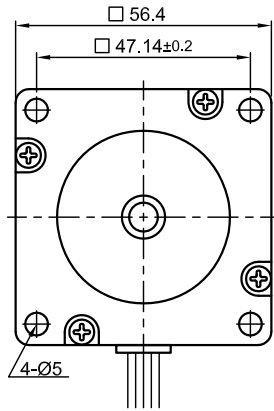
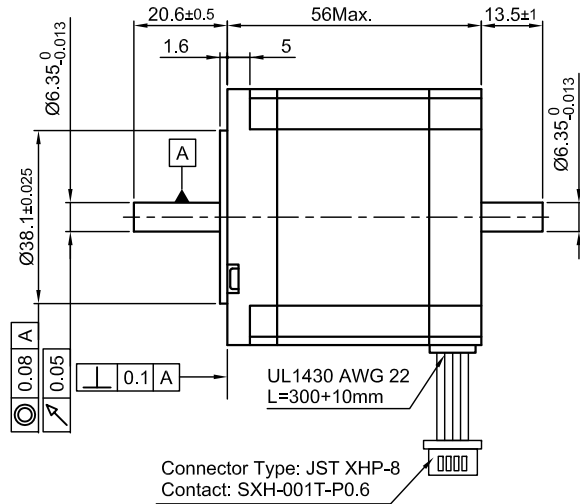


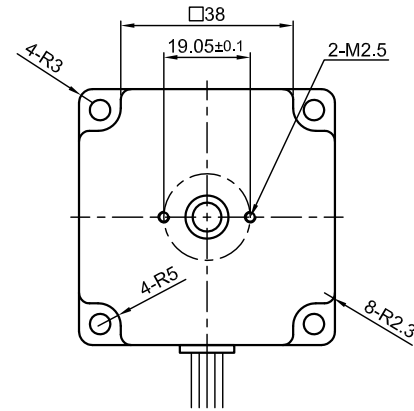
Front view and mounting



Side view



Rear view



Connector Type: JST XHP-8
Contact: SXH-001T-P0.6

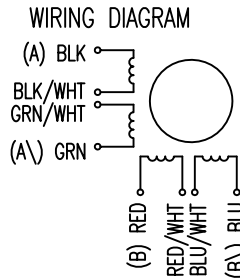
SPECIFICATION	CONNECTION	UNIPOLAR OR BIPOLAR-1 WINDING	BIPOLAR	
			SERIAL	PARALLEL
VOLTAGE (VDC)		3.6		
AMPS/PHASE		2.0	1.41	2.82
RESISTANCE/PHASE (Ohms)@25°C		1.8±10%	3.6±10%	0.9±10%
INDUCTANCE/PHASE (mH) @1KHz		4.5±20%	18±20%	4.5±20%
HOLDING TORQUE (Nm) [lb-in]		0.74 [6.55]	1.05 [9.29]	1.05 [9.29]
DETENT TORQUE (Nm) [lb-in]		0.04 [0.354]		
STEP ANGLE (°) ± ACCURACY		0.9±5% (NON-ACCUM)		
BACK-EMF (V) (300 U/min)			23 min.	Δ
ROTOR INERTIA (Kg-m ²) [lb-in ²]		3.0x10 ⁻⁵ [0.102]		
WEIGHT (Kg) [lb]		0.7 [1.54]		
TEMPERATURE RISE: MAX.80°C (MOTOR STANDSTILL; FOR 2 PHASE ENERGIZED)				
AMBIENT TEMPERATURE -10~ 50°C [14°F ~ 122°F]				
INSULATION RESISTANCE 100 MOhm (UNDER NORMAL TEMPERATURE AND HUMIDITY)				
INSULATION CLASS B 130° [266°F]				
DIELECTRIC STRENGTH 500VAC FOR 1 MIN. (BETWEEN THE MOTOR COILS AND THE MOTOR CASE)				
AMBIENT HUMIDITY MAX. 85% (NO CONDENSATION)				

PERMISSIBLE RADIAL+AXIAL FORCE		AXIAL-FORCE Fa (N)			
ROTOR SPRING-MOUNTED IN AXIAL DIRECTION		Fa=15			
DISTANCE a (mm)		5	10	15	20
RADIAL-FORCE Fr (N)		130	90	70	52
		AXIAL	RADIAL		
SHAFT PLAY (mm)		0.08	0.02		
AT LOAD MAX: (N)		4.5	4.5		

TYPE OF CONNECTION (EXTERN)				MOTOR		
UNIPOLAR	BIPOLAR			CONNECTOR PIN NO.	LEADS	WINDING
	TWINDING	SERIAL	PARALLEL			
A	A	A	A	1	BLK	A
COM	A			3	BLK/WHT	
A\		A\	A\	2	GRN/WHT	A\
B	B	B	B	4	GRN	B
COM	B			5	RED	
B\		B\	B\	7	RED/WHT	B\
				6	BLU/WHT	
				8	BLU	

FULL STEP 2 PHASE-Ex.,
WHEN FACING MOUNTING END (X)

STEP	A	B	A\	B\	CCW	CW
1	+	+	-	-	↓	↑
2	-	+	+	-	↓	↑
3	-	-	+	+	↓	↑
4	+	-	-	+	↓	↑



REV	DESCRIPTION	DATE	APVD
1	NEW VALUE OF EMK	15.01.09	J.W.

Nanotec
PLUG & DRIVE

ST5909M2008-B

SCALE	FREE	APVD	S.Ha.	09.12.08
X	±0.5	CHKD		
1PL	±0.2	DRN	J.W.	09.12.08
2PL	±0.1	SIGNATURE		
ANGLE	±30'	DATE		

STEPPING MOTOR

DWG.NO ST5909M2008-B