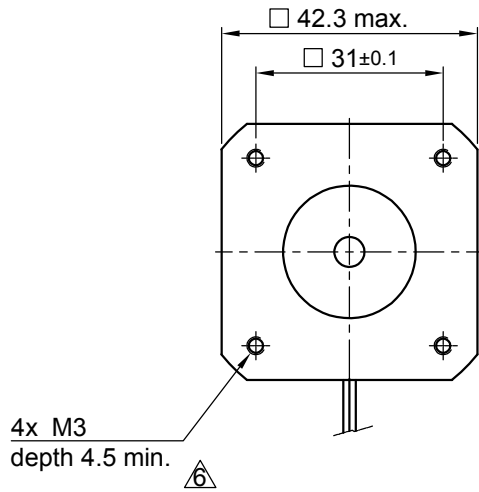
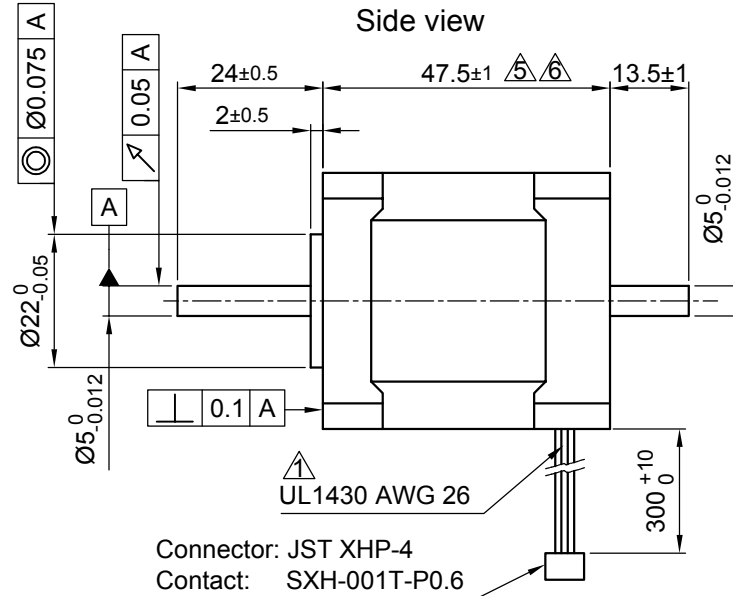


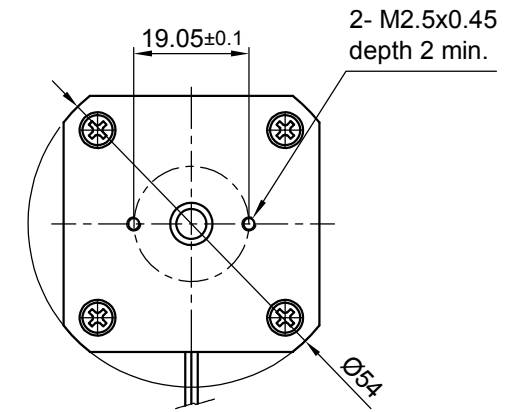
Front view and mounting



Side view

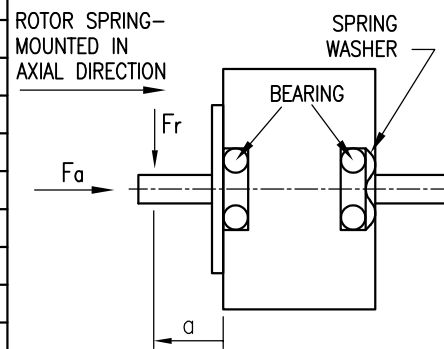


Rear view



CONNECTION	BIPOLAR
SPECIFICATION	
VOLTAGE (VDC)	3
AMPS/PHASE	1.68
RESISTANCE/PHASE (Ohms)@25°C	1.8±15%
INDUCTANCE/PHASE (mH) @1KHz	5.0±20%
HOLDING TORQUE (Nm) [lb-in]	0.44 [3.894]
STEP ANGLE (°)	0.9
STEP ACCURACY (NON-ACCUM)	±5%
ROTOR INERTIA (Kg-m <sup>2</sup> ) [lb-in <sup>2</sup> ]	6.8x10 <sup>-6</sup> [0.0232]
WEIGHT (Kg) [lb]	0.35 [0.77]

PERMISSIBLE RADIAL+AXIAL FORCE



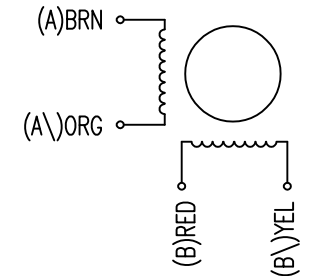
	AXIAL-FORCE Fa (N)	Fa=7			
AMBIENT TEMPERATURE -10°~ 50°C [14°F ~ 122°F]	DISTANCE a (mm)	5	10	15	20
INSULATION RESISTANCE 100 MOhm (UNDER NORMAL TEMPERATURE AND HUMIDITY)	RADIAL-FORCE Fr (N)	58	36	26	20
INSULATION CLASS B 130° [266°F]			AXIAL	RADIAL	
DIELECTRIC STRENGTH 500VAC FOR 1 MIN. (BETWEEN THE MOTOR COILS AND THE MOTOR CASE)	SHAFT PLAY (mm)	0.075	0.025		
AMBIENT HUMIDITY MAX. 85% (NO CONDENSATION)	AT LOAD MAX: (N)	10	5.0		

TYPE OF CONNECTION (EXTERN)	MOTOR			
	BIPOLAR	CONNECTOR PIN NO.	LEADS	WINDING
A —	1	BRN	A	
A\ —	2	ORG	A\	
B —	3	RED	B	
B\ —	4	YEL	B\	

FULL STEP 2 PHASE-Ex., WHEN FACING MOUNTING END (X)

STEP	A	B	A\'	B\'	CCW	CW
1	+	+	-	-	↓	↑
2	-	+	+	-	↓	↑
3	-	-	+	+	↓	↑
4	+	-	-	+	↓	↑

WIRING DIAGRAM



6	updt. mot. length/rev. dwg	17.05.17	A.S.
5	MOTOR LENGTH TOLERANCE	03.04.17	G.S.
4	NEW DATA	17.06.16	B.L.
REV	DESCRIPTION	DATE	DRN



Surface specification DIN ISO 1302	General tolerances DIN ISO 2768- cH	Work piece edge DIN ISO 13715
---------------------------------------	--	----------------------------------

APVD	S.Ha.	26.02.07
CHKD		
DRN	J.W.	21.06.06
SIGNATURE	DATE	

STEPPING MOTOR

DWG.NO

ST4209L1704-B