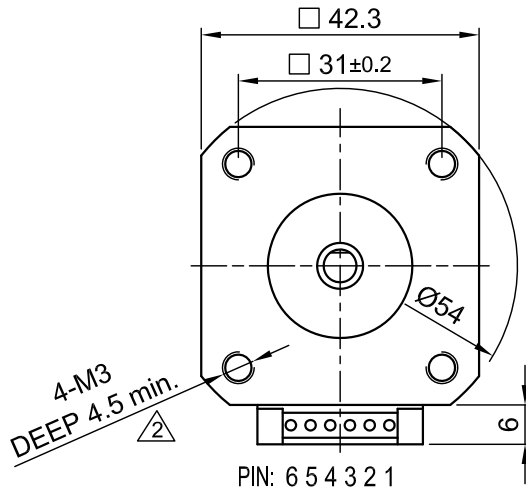
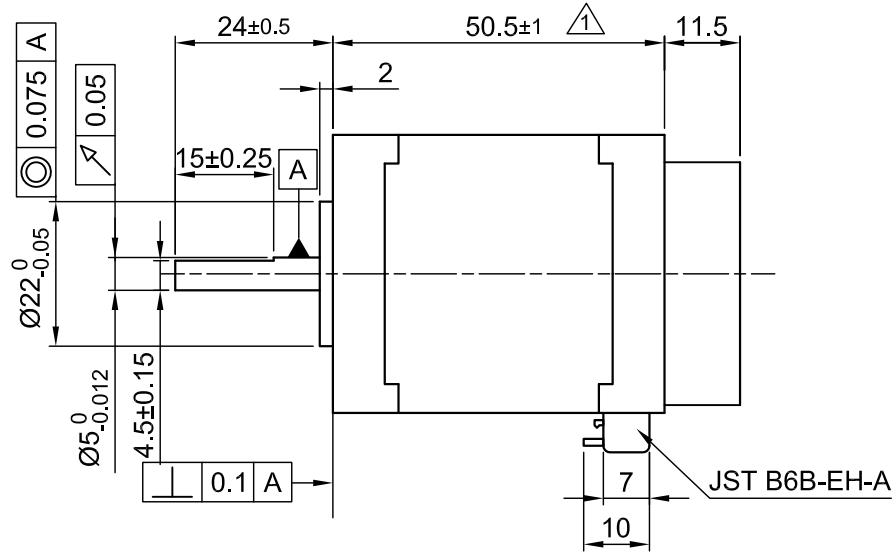


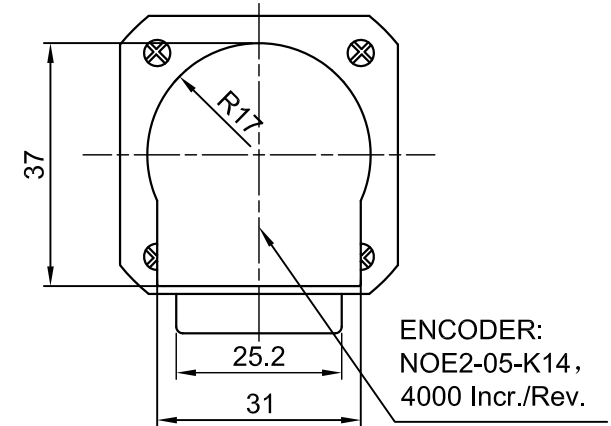
Front view and mounting



Side view

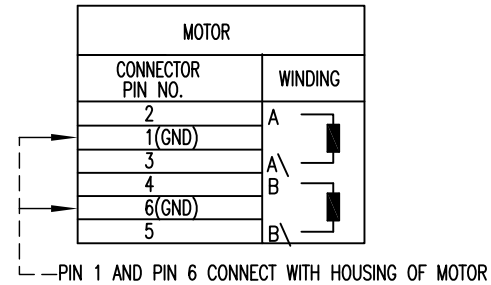
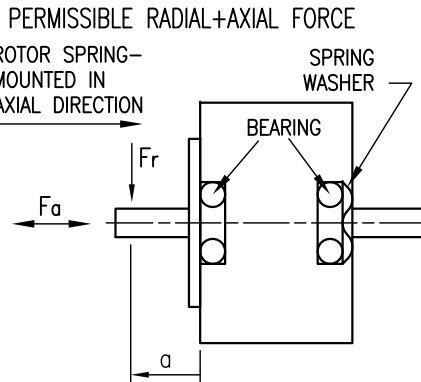


Rear view



SPECIFICATION	CONNECTION	BIPOLAR SERIES
VOLTAGE (VDC)		3.15
AMPS/PHASE		1.8
RESISTANCE/PHASE (Ohms)@25°C		1.75±15%
INDUCTANCE/PHASE (mH) @1KHz		3.3±20%
HOLDING TORQUE (Nm) [lb-in]		0.5 [4.425]
DETENT TORQUE (Nm) [lb-in]		1.37x10 ⁻² [0.1212]
STEP ANGLE (°)		1.8
ACCURACY (NON-ACCUM)		±5%
ROTOR INERTIA (Kg-m ²) [lb-in ²]		8.2x10 ⁻⁶ [2.8x10 ⁻²]
WEIGHT (Kg) [lb]		0.34 [0.75]
TEMPERATURE RISE: MAX.80°C (MOTOR STANDSTILL; FOR 2 PHASE ENERGIZED)		
AMBIENT TEMPERATURE -10~ 50°C [14°F ~ 122°F]		
INSULATION RESISTANCE 100 MOhm (UNDER NORMAL TEMPERATURE AND HUMIDITY)		
INSULATION CLASS B 130° [266°F]		
DIELECTRIC STRENGTH 500VAC FOR 1 MIN. (BETWEEN THE MOTOR COILS AND THE MOTOR CASE)		
AMBIENT HUMIDITY MAX. 85% (NO CONDENSATION)		

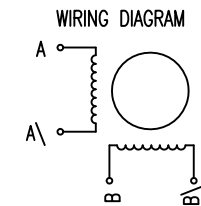
PERMISSIBLE RADIAL+AXIAL FORCE					
ROTOR SPRING-MOUNTED IN AXIAL DIRECTION					
AXIAL-FORCE Fa (N)		Fa=7			
DISTANCE a (mm)		5	10	15	20
RADIAL-FORCE Fr (N)		58	36	26	20
		AXIAL		RADIAL	
SHAFT PLAY (mm)		0.08		0.02	
AT LOAD MAX: (N)		4.5		4.5	



ENCODER PIN ASSIGNMENT	JST SM10B-GHS-TB
PIN NO.	FUNCTION
PIN 1	GND
PIN 2	A
PIN 3	A\
PIN 4	B\
PIN 5	B
PIN 6	I\
PIN 7	I
PIN 8	0V
PIN 9	+5V
PIN 10	GND

FULL STEP 2 PHASE-Ex., WHEN FACING MOUNTING END (X)

STEP	A	B	A\	B\	CCW
1	+	+	-	-	↓
2	-	+	+	-	↑
3	-	-	+	+	↓
4	+	-	-	+	↑



REV	DESCRIPTION	DATE	APVD	Surface specification DIN ISO 1302			General tolerances DIN ISO 2768- cH			Work piece edge DIN ISO 13715			APVD	G.S.	DATE	STEPPING MOTOR
02	4-M3 DEPTH TOLERANCE	27.10.16	GYQ										CHKD	L B	24.10.12	
01	NEW MOTOR LENGTH	25.08.14	GYQ										DRN	GYQ	24.10.12	
REV	DESCRIPTION	DATE	APVD										SIGNATURE		DATE	DWG.NO
																SC4118L1804-EN005K