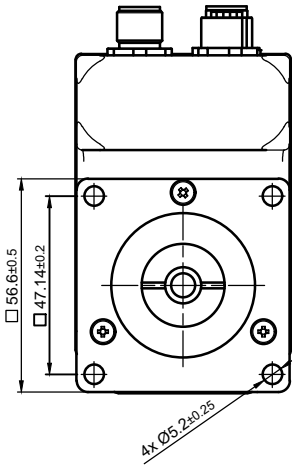
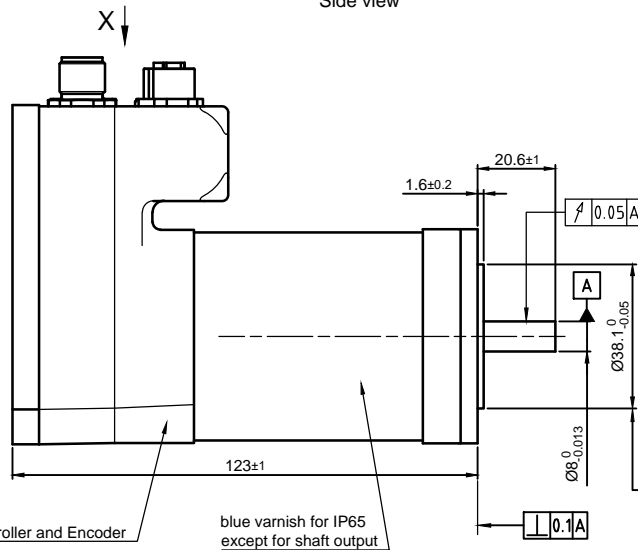


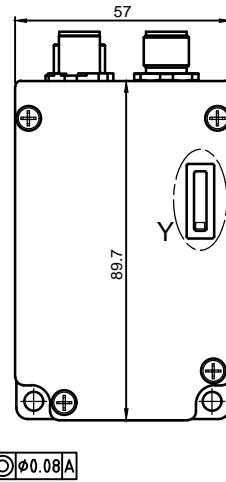
Front view and mounting



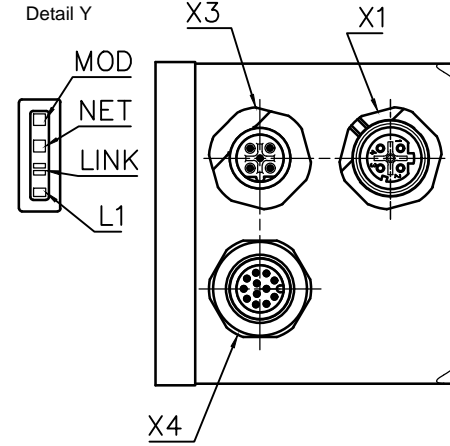
Side view



Rear view



View X (Detail)



X1 EtherNet/ IP	
M12/ 4-Pole / D-Coding / female	
Pin No.	Function
1	TD+
2	RD+
3	TD-
4	RD-

X3 POWER	
M12/ 5-Pole / B-Coding / male	
Pin No.	Function
1	+UB (12-48V)
2	+UB (12-48V)
3	GND
4	GND
5	N.C.

X4 IO	
M12/ 12-Pole / A-Coding / male	
Pin No.	Function
1	GND
2	Input 1 (+5V/+24V)
3	Input 2 (+5V/+24V)
4	Input 3 (+5V/+24V)
5	Input 4 (+5V/+24V)
6	Input 5 (+5V/+24V)
7	Input 6 (+5V/+24V)
8	Analog Input (0-10V/0-20mA)
9	Output 1 (open drain)
10	Output 2 (open drain)
11	+5V Voltage Supply (max. 100mA)
12	+UB Logic (24V)

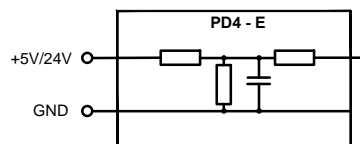
MOTOR SPECIFICATION

No. of Poles	6	
Rated Voltage	V DC	48
Operating Voltage - Min. / Max.	V DC	12 48
Current - Rated / Peak	A	6 18
Torque - Rated / Peak	Nm	0.6 1.8
Torque Constant	Nm/A	0.1
Power - Rated / Peak	W	220 660
Speed - No Load / Rated	±10% rpm	4500 3500
Singleturn Encoder Resolution	bit	12
Rotor Inertia	kg m ²	17.3 x10 ⁻⁶

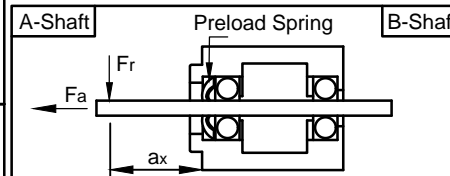
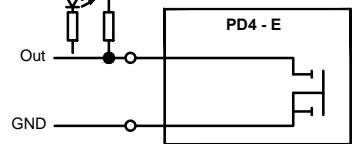
GENERAL MOTOR SPECIFICATION

Interface		ETHERNET/IP	
Ambient Temperature	°C	Min. -10	Max. 40
Switch-off Temperature	°C	75	
Max. Ambient Humidity (non condensing)	%	85	
Insulation Class	B		
Insulation Resistance	MΩ	100	
Dielectric Strength (for 1 min - coil to case)	V AC	500	
Protection Class (except shaft outlet)	IP65		

INPUT CONNECTION



OUTPUT CONNECTION



Max. Axial Force	Fa	N	15
Max. Radial Force	Fr (a1 = 5 mm)	N	130
Axial Play	Fa = 10 N	mm	0.03
Radial Play	Fr = 5 N	mm	0.02

ISO 8015	ISO 1302	ISO 2768-1 cK	ISO 13715	Weight: 1.35 kg
		Date	Name	PD4-EB59CD-E-65-3
		Drawn	Import	
		Checked	####	
		Approved	05.04.2018	Wang_X
REV	Rev. Text	Name	Rel. Date	



09000010

State: Released

Rev: -.A

P